



مؤسسة شهاب للتجارة

تجارة - مقاولات - تموينات عامة

SHAHABUDDIN HEAVY EQUIPMENT DIVISION

During the recent years Shahabuddin Trading and Contracting Establishment, started their Heavy Equipment Division (1998) which includes Sales and Rental of Construction Equipment specially Cranes, Excavators, Wheel Loaders, Bulldozers, Generators, Boom Trucks, Manlifts, Air Compressors, Tower Lights, Forklifts etc.

Shahab Heavy Equipment offers Sales and Rentals of Heavy Equipment to meet the customer demand. The following is just an indication of our range which indicates we can source out the need of our Valuable Clients.

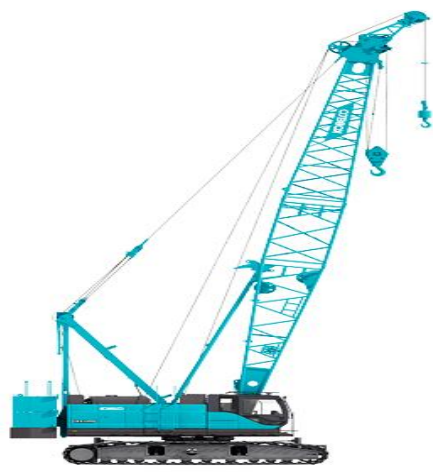
Perkins / Cummins Generators from 10 kva to 2250kva (**Sales and Rental**) & Tower Lights (U.S.A)

1) SULLIVAN PALATEK MOBIL AIR COMPRESSOR (U.S.A)





2) TADANO / KATO, TADANO FAUN, LIEBHERR, ZOOMLOIN, XCMG
Cranes includes Crawler and Mobile cranes from 20 tons to 700 tons
(ON SALES & RENT)



1) EXCAVATORS 20 tons to 85 tons (ON RENT)



2) WHEEL LOADERS LUIGONG, HELI, VOLVO, HITACHI (SALES & RENT)



TRANSPORT DIVISION:

This Division came into existence in the year 2009 when Shahabuddin Trading & Contracting Est. was awarded a Transport Contract by Saudi Archirodon (ALSTOM Sub Contractor). The Contract includes the Transportation of various Construction Material (Portable Cabins, Sheet Piles, Pipes) and Construction Machinery like the LIEBHERR Excavators R 984 Cranes of various sizes and Earthmoving Machinery from Jeddah to different sites in the Country, to other Countries in the Middle East like Qatar, UAE etc.





Company is involved in the Transportation of Ballast and Gravel Material (Approximately 11,300/- Trips) was carried out in less than Three months for one of the Prestigious Projects in the Western region.

References: Saudi Archirodon, China Communication Construction Company Ltd, HUTA Hegerfeld, Mahdood for Fast Construction, Abul Jadayel Company for Contracting, Advanced Construction Company Ltd, S. S. E. M, Metal Services Company, Issam Kabbani & Partners, DOOSAN, HYUNDAI, Zamil Heavy Industries Co., Ltd etc.

SHAHABUDDIN CONSTRUCTION MACHINERY SPARE PARTS DIVISION:

Sighting the demand in the Market for the Equipments to run smoothly with less down time, Shahabuddin Spare Parts Division can provide the needed solution to the end users in order to save the down time of the Construction Equipment like TADANO

Cranes, KATO Cranes, KOBELCO Cranes, LIEBHERR Cranes, HYUNDAI Excavators, DOOSAN Excavators, JCB Backhoe Loaders, FORKLIFT Truck Parts for all the manufacturers (MITSUBISHI, CATERPILLAR, TCM, NISSAN, TOYOTA, YALE, HYSTER, even the Chinese Forklift Truck Parts can be arranged).

Contact info:

Eng. Junaid Ali Khan

General Manager

Cell: 050-28-96-500.

Telefax: 012-667-13-57. Email: atozexportsimports@yahoo.com